



Dear Valuable Customer,

You are a proud owner of Wep Billing Printer. Our machines are easy to operate, effortless & easy to maintain on low running costs. Enjoy our fantastic service spread across the country through well networked Authorized Service Providers. This Technical Communication guide will help you to operate the Machine easily and help you to diagnose and troubleshoot in case of any problem. Regarding any suggestion and feedback e-mail us at [rbp.support@wepindia.com](mailto:rbp.support@wepindia.com)



## INDEX

<b>Sr. NO.</b>	<b>Description</b>	<b>Page No.</b>	<b>DOR</b>
1	Printer drivers installation for TH 400 PRO	3-7	8th Jan 22



## Printer Drivers Installation Process in TH 400 Pro

Technical Communication No. 01

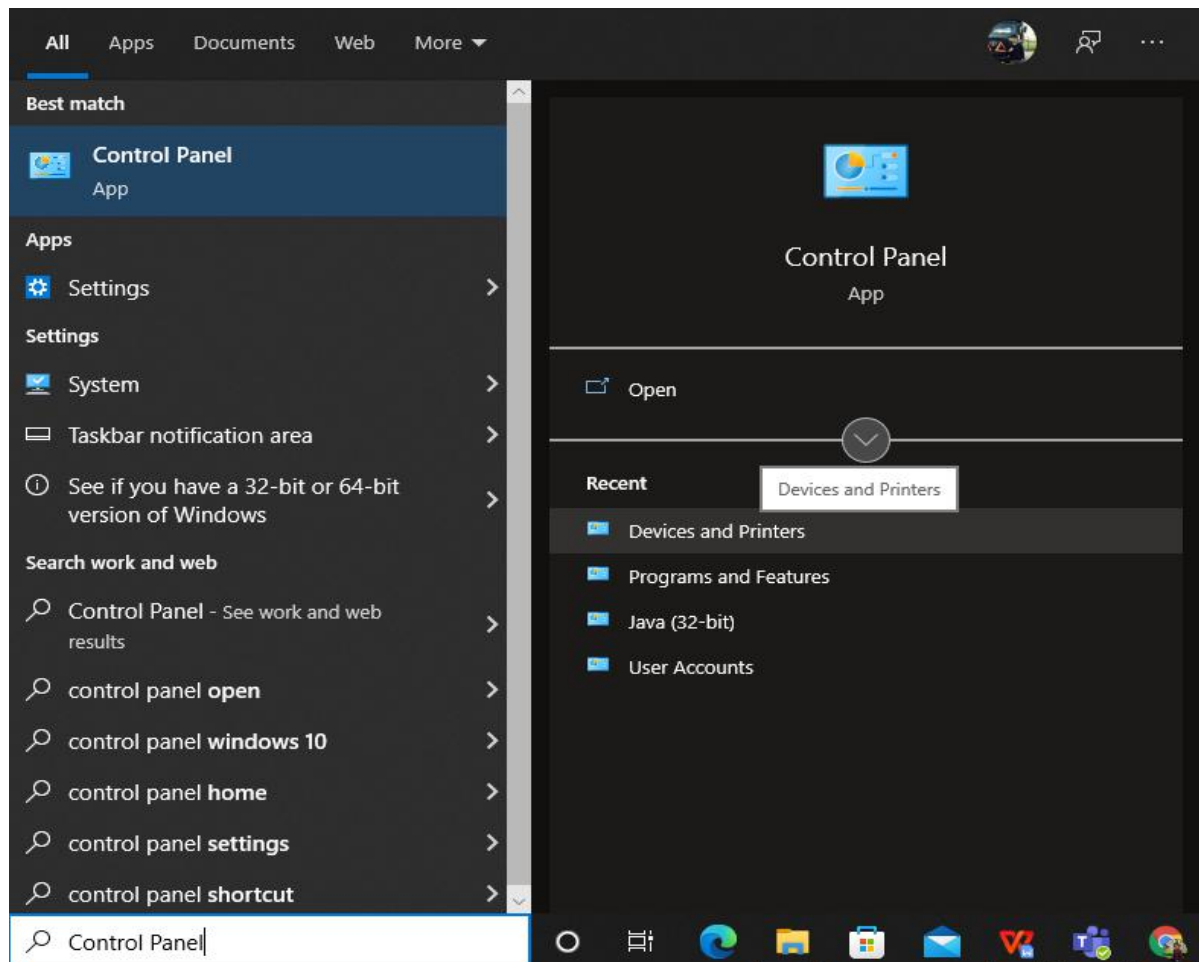
Date of Release: 08<sup>th</sup> Jan 2022

Models Covered: TH-400 PRO

**Introduction:** Introducing the TH 400 Pro billing printer to the range of retail billing printers from WeP solutions Limited. TH 400 Pro comes with features of High printing speed of 200 mm/sec, High Quality printing of 203 DPI with print width of 72mm. In this technical note we will go through the process of drivers installation for operations and usage of this thermal Printer.

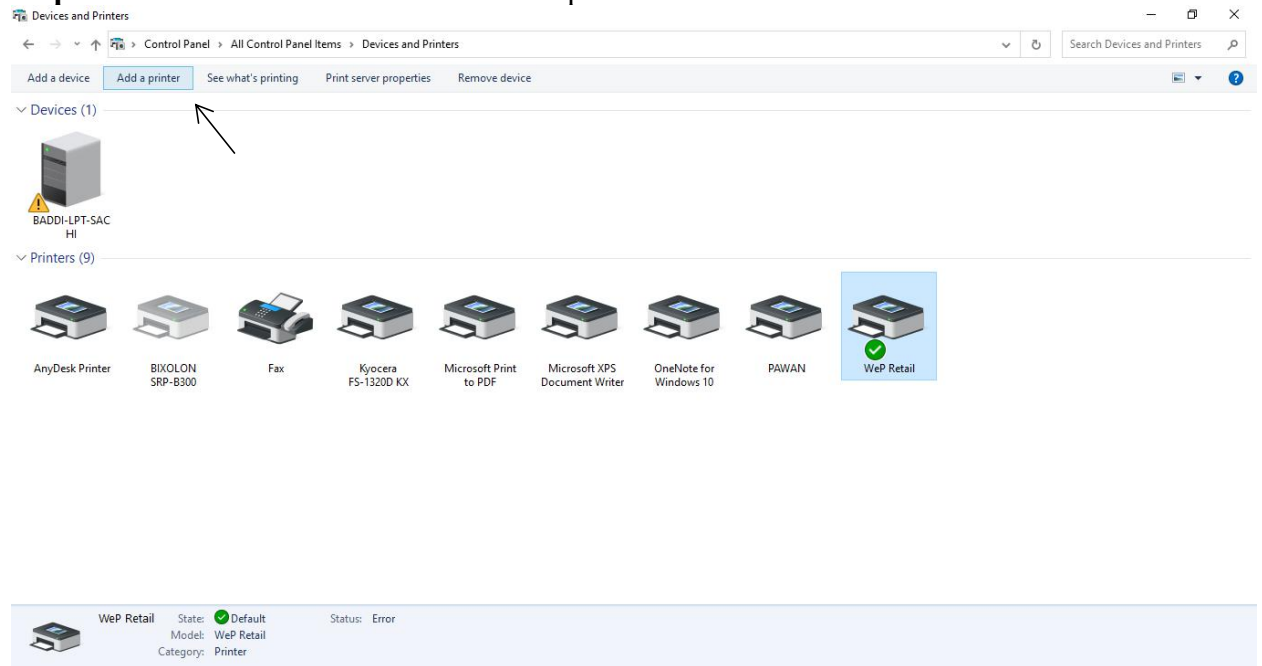
### Procedure to Install drivers for TH 400 Pro

**Step-1:** Go to Control Panel and select for Devices and Printers.

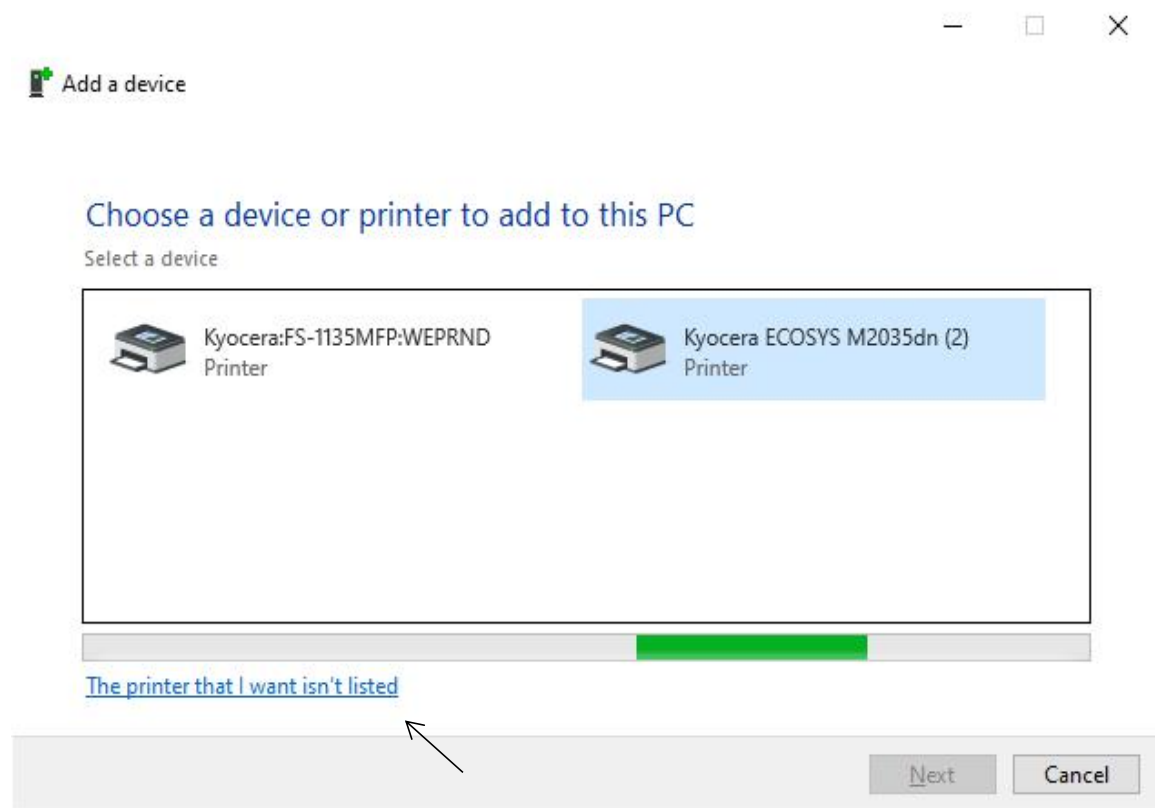




**Step-2:** Select for Add a Printer in Control panel window.



**Step-3:** In this step we have to go with The Printer I want isn't listed.



**Step-4:** Select for Add a local printer or network printer with manual settings.



← Add Printer

### Find a printer by other options

My printer is a little older. Help me find it.

Select a shared printer by name

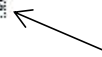
Browse...

Example: \\computersname\printername or  
http://computersname/printers/printername/.printer

Add a printer using a TCP/IP address or hostname

Add a Bluetooth, wireless or network discoverable printer

Add a local printer or network printer with manual settings



Next

Cancel

**Step-5:** Choose for the connectivity port required to make connections b/w PC and Printer.

← Add Printer

### Choose a printer port

A printer port is a type of connection that allows your computer to exchange information with a printer.

Use an existing port:

Create a new port:

Type of port:

- COM1: (Serial Port)
- LPT1: (Printer Port)
- LPT2: (Printer Port)
- LPT3: (Printer Port)
- COM1: (Serial Port)
- COM2: (Serial Port)
- COM3: (Serial Port)
- COM4: (Serial Port)
- FILE: (Print to File)
- 192.168.1.52 (Standard TCP/IP Port)
- 192.168.1.53 (Standard TCP/IP Port)
- AD\_Port (Local Port)
- Microsoft.Office.OneNote\_16001.12026.20112.0\_x64\_8wekyb3d8bbwe
- Microsoft.Office.OneNote\_16001.14326.20588.0\_x64\_8wekyb3d8bbwe
- PORTPROMPT: (Local Port)
- USB001 (Virtual printer port for USB)

Next Cancel

**Step-6:** Select for have a disk and browse the setup file for drivers installation  
\*Here is the link to get drivers file for TH 400 PRO



[https://wepsol-my.sharepoint.com/:u:/g/personal/sachind\\_wepindia\\_com/EX51K03ZUuFEk9AXMza-nB0B8BGaSXDiyYF5OqdtHIGrRw?e=xDTNNI](https://wepsol-my.sharepoint.com/:u:/g/personal/sachind_wepindia_com/EX51K03ZUuFEk9AXMza-nB0B8BGaSXDiyYF5OqdtHIGrRw?e=xDTNNI)

← Add Printer ×

### Install the printer driver

Choose your printer from the list. Click Windows Update to see more models.  
To install the driver from an installation CD, click Have Disk.

Manufacturer	Printers
AnyDesk	Kyocera FS-1130MFP KX
BIXOLON	Kyocera FS-1135MFP KX
Generic	Kyocera FS-1300D KX
Kyocera	Kyocera FS-1320D KX
Mi...	Kyocera FS-1350D KX

This driver is digitally signed.    
[Tell me why driver signing is important](#)

### Install From Disk

Insert the manufacturer's installation disk, and then make sure that the correct drive is selected below.

Copy manufacturer's files from:

**Step-9:** After installing the drivers right click on “BIXOLON SRP-B300” and select for “Set as default printer”.



Regarding any Feedback and queries, kindly reach us on below:

Mail Id: [rbp.support@wepindia.com](mailto:rbp.support@wepindia.com)

Toll Free Number: 8103 500 500

WhatsApp Number: +91-9148224129